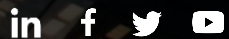




BOULEVARD CONSULTING SERVICES OVERVIEW

AN OVERVIEW OF OUR SERVICES



CONFIDENTIAL AND PROPRIETARY

Any use of this material without specific permission of Boulevard Consulting is strictly prohibited. Copyright ©2025.

boulevardconsulting



CONTENT

WHO WE ARE	03
BOULEVARD LABS	04
PRODUCTS	06
PROTOTYPES	09
PAST PERFORMANCE	15
DOING BUSINESS	25



WHO WE ARE

In electing to review our brief, perhaps you are choosing to change. Change. What is it? Is it empowering the workforce, realizing operational improvements, or crafting and executing a transformative strategy that may entirely re-position your organization to create more value in industry, in government, or in the community? Small or large investments, short- or long-term engagements, our consultants work with you to create a strategy for change, and we support you in executing a plan that moves your organization or team toward providing greater value, while doing so with the appropriate resources and support mechanisms that must be ready for when you need them.

Boulevard is a modern management and technology consulting firm that helps clients leverage the power of data science, operational transformation, and cutting-edge technology to build a better future. We develop highly scalable and impactful solutions by combining the latest technology trends with time-tested improvement methodologies, and with the personalized attention of a smaller firm. Our services span three core areas: organizational transformation, operational improvement, and digital transformation.

Our community of highly specialized problem solvers brings bold thinking, technical expertise, and creativity to help our clients across industry not only tackle the challenges of today, but solidify a better, more meaningful future.

Headquartered in Arlington, Virginia, we are a Native American-owned, Small Business Administration (SBA)-certified 8(a) Small Business.



BOULEVARD LABS

TURNING INSIGHT INTO ACTION

CONFIDENTIAL AND PROPRIETARY

Any use of this material without specific permission of Boulevard Consulting is strictly prohibited. Copyright ©2025.



OVERVIEW

Boulevard Labs leads innovation by delivering cutting-edge solutions to address complex organizational challenges. As part of The Boulevard Consulting Group, we combine advanced technology, secure analytics, and tailored applications to transform data utilization. From financial forecasting to risk management and system sustainment, our tools empower organizations with actionable insights that drive measurable results.

Meticulously designed, our solutions tackle real-world problems with precision. From predictive analytics and streamlined financial management to real-time system monitoring, each tool meets the unique needs of government and private sector clients. Rooted in security and compliance, we ensure data integrity for informed decision-making. At Boulevard Labs, innovation meets expertise. Our team of data scientists, engineers, and consultants develops scalable, impactful solutions tailored to each client's objectives. Leveraging state-of-the-art technologies like machine learning and AI, we ensure clients remain agile and competitive in an evolving landscape.

With predictive planning tools, risk forecasting systems, and secure monitoring applications, Boulevard Labs unlocks organizational potential. Whether navigating fragmented data or preparing for future challenges, we transform big data into opportunities for growth and success.



PRODUCTS

TAILORED SOLUTIONS BUILT TO DELIVER IMPACT

CONFIDENTIAL AND PROPRIETARY

Any use of this material without specific permission of Boulevard Consulting is strictly prohibited. Copyright ©2025.



ECHO™

AI POWERED TRANSCRIPTION TOOL

OVERVIEW

Echo is an AI-powered transcription platform that enables organizations to transform audio and video content into accurate, searchable text. With a user-friendly interface and accessibility across multiple devices, Echo delivers real-time transcription alongside intelligent formatting features that enhance readability and usability. Seamless integration with various file types allows users to upload, organize, and process content quickly—streamlining workflows across teams.

Designed to support professionals across government, media, legal, and research sectors, Echo not only improves documentation accuracy but also saves valuable time in post-production and content analysis. Its collaborative features allow users to annotate, share, and export transcripts with ease, making it a powerful tool for environments where clear communication and efficient information management are critical.





RECAST

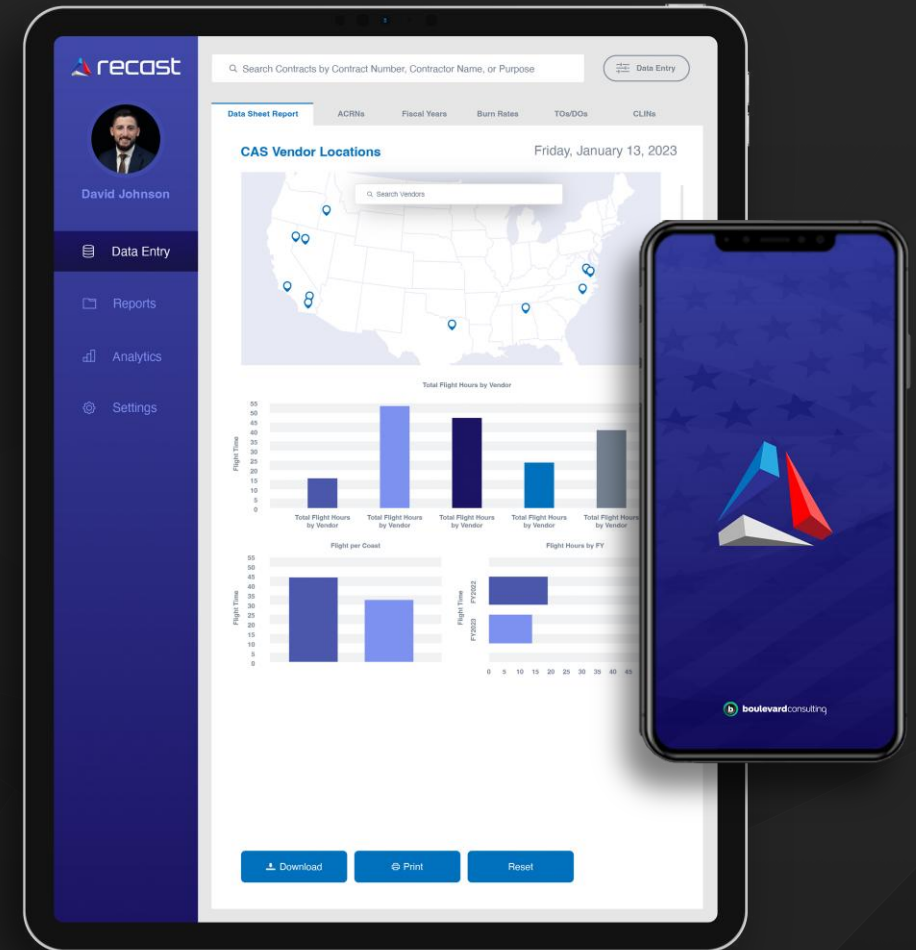
FINANCIAL RISK & ACQUISITION MANAGEMENT TOOL

OVERVIEW

RECAST is a state-of-the-art financial data management tool specifically designed for government entities, offering a comprehensive solution for tackling the challenges of fragmented and error-prone financial data.

It revolutionizes financial planning by integrating predictive analytics for accurate risk forecasting and facilitating informed decision-making. RECAST's dynamic machine learning framework allows continuous model improvement and reparameterization with new data, significantly reducing the need for manual model monitoring.

This innovative approach ensures accuracy and reliability in financial data management, enhancing transparency and efficiency in government financial operations. With each use, RECAST's predictions and recommendations become increasingly precise, making it an indispensable tool for modern financial management in the public sector.





PROTOTYPES

BUILDING SOLUTIONS THROUGH IDEAS

CONFIDENTIAL AND PROPRIETARY

Any use of this material without specific permission of Boulevard Consulting is strictly prohibited. Copyright ©2025.



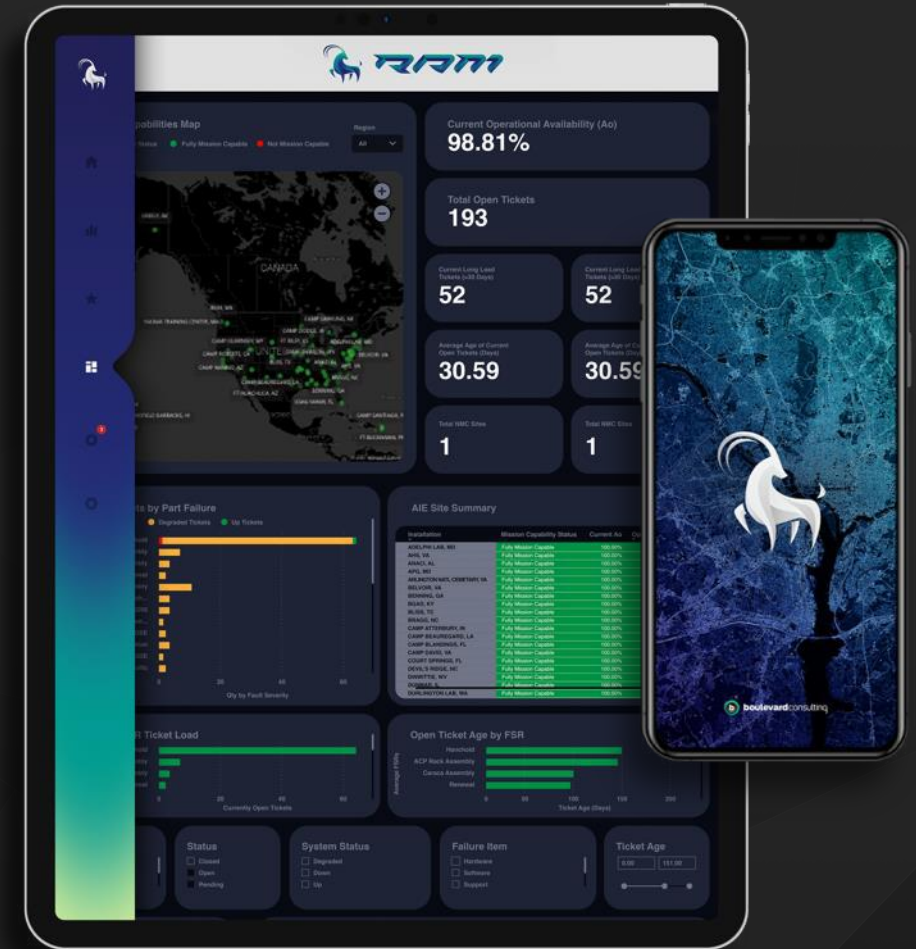
RAM

RELIABILITY ANALYTICS MODEL

OVERVIEW

The Reliability Analytics Model (RAM) is a technology monitoring application which provides organizations with a view on the status of their technological systems around the world. With an easy-to-use interface and accessibility to the platform across a variety of devices, RAM provides users with real-time performance metrics and predictive insights regarding potential issues.

Additionally, RAM provides a holistic view of system health, vulnerabilities, risks, and mitigation strategies based on asset type. With a live data connection, end-users can view fault resolution in near real time. Currently deployed with a variety of client organizations, RAM enables end-users to submit and track system outage help desk tickets and communicate with program office personnel at the click of a button.





RAM+

RELIABILITY ANALYTICS MODEL + OVERSIGHT TOOL

OVERVIEW

Rapid and transparent technology sustainment is a goal for all organizations – whether that be inclusive in an enterprise accounting application or a multi-location military base security system.

Our team developed RAM (formerly A-RAM) which utilizes military-standard system reliability calculations to provide a holistic view of system health and vulnerability levels by geographical location/site. With a live data connection, end-users can view fault resolution in near real time.

AT WORK FOR THE U.S. MILITARY: Deployed to over 200 multi-user installations, RAM enables end-users to submit and track system outage help desk tickets and communicate with program office personnel at the click of a button.

With defensible analytics at the ready, the program office currently uses this application to not only track system performance, but also optimize parts inventory to minimize cost and repair time.





DYNAMAQ

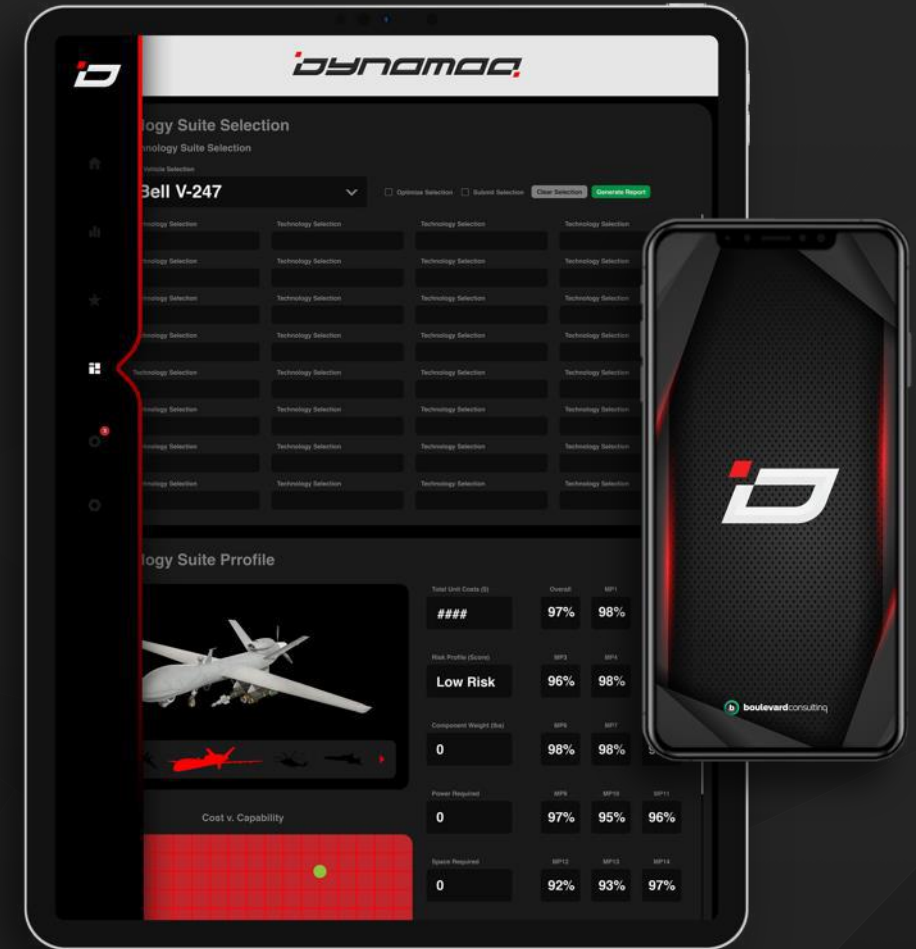
DYNAMIC ACQUISITION TOOL

OVERVIEW

Mission-based gap analyses form the foundation of the acquisition process. However, just as there are multiple ways to win a game of poker, there are often multiple viable approaches to achieving a mission objective.

What is the optimal way of accomplishing a mission? Answers to this question can often bring organizations down the path of inefficient spending or a prolonged acquisition timeline. It can even introduce the risk that the organization acquires a technology solution that does not fully solve the problem.

DYNAMAQ utilizes a multivariate game-planning algorithm to translate user-defined mission requirements to a suite of technologies necessary to satisfy said requirements at a notional cost and risk level. This application outlines the requirements along with costs and risks associated with each course of action to help determine the optimal path ahead.





OVERWATCH

CONTRACT PERFORMANCE OVERSIGHT MANAGEMENT TOOL

OVERVIEW

Overwatch is a centralized platform for managing the long-term sustainment repair and oversight for equipment systems and technology suites. Overwatch synthesizes data from multiple sources to identify risks, achieve efficiencies through automation, and ultimately improve program execution and performance.

This tool features a complete model customization capability allowing users to develop models independently or leverage a combination of built-in and recommended machine learning models. These continual machine learning frameworks allow Overwatch to forecast risk, cost, and future repairs for equipment against annual allowances and expectations.

As more relevant data sources are incorporated into the environment, Overwatch sifts through the noise to retrain and reparametrize its algorithm to minimize model performance monitoring needs and consistently provide accurate results over time.





AUREUS

FINANCIAL RISK & ACQUISITION MANAGEMENT TOOL

OVERVIEW

Aureus is a predictive financial planning tool which provides organizations with a forecast of budget requirements to facilitate an organization's annual priorities while minimizing financial risks.

Aureus identifies the optimal resource allocation plan for organization-based, user-defined priorities, and risk evaluation. It provides budgeting and financial planners with sufficient insight and justification for budget requests.

Using machine learning and artificial intelligence, Aureus's recommendations and predictions become more accurate with every use.





PAST PERFORMANCE

OUR WORK IN ACTION

CONFIDENTIAL AND PROPRIETARY

Any use of this material without specific permission of Boulevard Consulting is strictly prohibited. Copyright ©2025.

boulevardconsulting

DEPLOYING A LOGISTICS RELIABILITY ANALYTICS & VISUALIZATION SOLUTION

CASE STUDY: U.S. ARMY

OVERVIEW

Rapid and transparent technology sustainment is a goal for all organizations –whether that be inclusive in an enterprise accounting application or a multi-location military base security system. Our team developed **RAM** (formerly A-RAM) which utilizes military standard system reliability calculations to provide a holistic view of system health and vulnerability levels by geographical location/site. With a live data connection, end-users can view fault resolution in near real time.

Deployed to over 200 multi-user installations, **RAM** enables end-users to submit and track system outage help desk tickets and communicate with program office personnel at the click of a button.



Deployed to **200+**
Multi-user Installations



Average of **243** Tickets
Assessed Daily

With defensible analytics at the ready, the Army currently uses this application to not only track system performance, but also optimize parts inventory to minimize cost and repair time.



KEY FEATURES

- Site Specific & Enterprise Level Reliability Reporting and Visuals for end-users with internet access
- Repair Technician Performance Tracking Metrics (e.g., Percentage of Tickets Closed, Total Tickets Closed, Missed Tickets)
- Automatic System/Platform Help Desk Ticket Reporting
- Root Cause Analysis Visuals

RELEVANCY SERVICE AREAS

- Data Analytics & Visualization
- Artificial Intelligence & Data Science
- Digital Transformation
- Information Technology & Cloud

PREDICTING RISK & MISSION SUCCESS THROUGH ASSET MODELING

CASE STUDY: U.S. NAVY

OVERVIEW

With an aging fleet, the U.S. Navy was – and is regularly – faced with identifying and weighing options for strategically investing in a variety of warfighting capabilities. Given many mission needs, the U.S. Navy required an analysis to understand the optimal technology requirements to ensure the right capability to support critical missions around the world.

Navy leadership believed a new aviation platform was required to support the varying types of combat environments and mission requirements. Prior to acquiring a new platform, they approached Boulevard to perform a gap analyses and outline the capability areas with greatest need. Boulevard developed and used **DYNAMAQ** to outline the current technologies onboard various aircraft and the possibility of mission success to make the best acquisition decision.

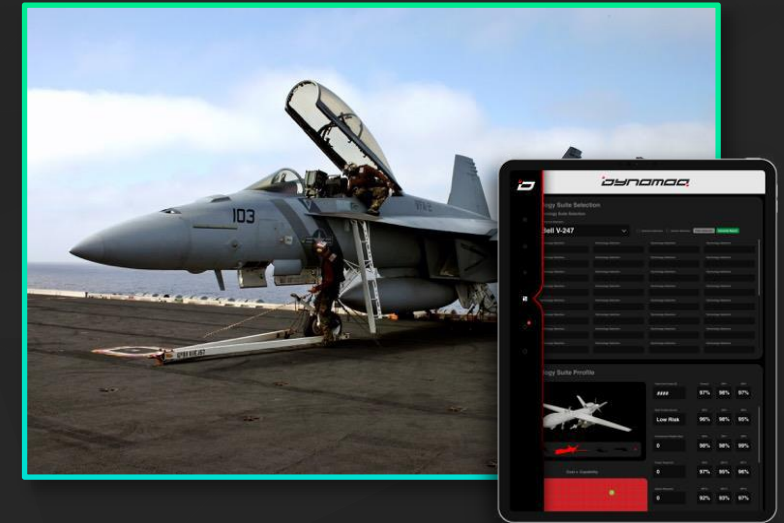


Compiled information from over **25** aviation technology suite databases



Provided acquisition support on technologies valued greater than **\$100M**

The study provided insights across several alternative aircraft sought as replacements to the current training aircraft. The consolidated application tool developed by Boulevard, in conjunction with the multi-level analysis approach, provided Naval leadership actionable information to support only the most informed and defensible acquisition/sustainment strategies and decisions for its training aircraft.



KEY FEATURES

- User-defined requirements submission
- Custom-Built Analysis of Alternatives (AoA)/Business Case Analysis (BCA) Framework
- Custom-Built Risk Register
- Dynamic capability suite functionality

RELEVANCY SERVICE AREAS

- Data Analytics & Visualization
- Artificial Intelligence & Data Science
- Digital Transformation

REDUCING REPAIR TIME AND SUPPLY CHAIN COST WITH PREDICTIVE ANALYTICS

CASE STUDY: U.S. ARMY

OVERVIEW

The client was responsible for digging through several disparate data files, third-party solutions, and home-grown software systems to monitor and plan for sensor system repairs. Analysts spent hours searching for and analyzing files in different formats with varying levels of accuracy and usefulness, to then make a judgement call on current sensor system status. To compound the issue, no robust plan for rapidly and effectively responding to equipment failure existed.

Our consultants identified solutions to eliminate, consolidate, and/or integrate various data elements, create protocols for data cleansing, and built OVERWATCH to help decision makers understand problem areas quickly, monitor system/platform performance, and quickly assess the resources required to keep systems performing to standard. The model does this through its classification prediction algorithm that indicates groupings for types of repairs, along with the likely timeline to complete such repairs.



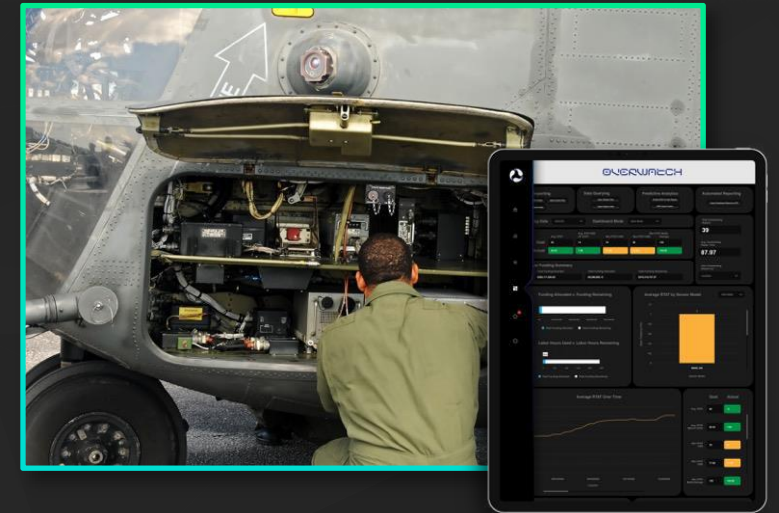
Reduced administrative repair management time by **35%**



Cleansed and evaluated data from **5+** sources

CONCLUSION

Using the BoulevardLabs data environment, Boulevard created this custom data management and business intelligence model that provides automation, streamlining tasks including the delivery order generation process. For our client, this allowed funding approvals to be processed in a timely manner and provided continuous monitoring of risks to determine the likelihood of surpassing expected levels.



KEY FEATURES

- Site Specific & Enterprise Level Reliability Reporting and Visuals for end-users with internet access
- Technician Performance Tracking Metrics (e.g., Percentage of Tickets Closed, Total Tickets Closed, Missed Tickets)
- Automatic System/Platform Help Desk Ticket Reporting
- Root Cause Analysis Visuals

RELEVANCY SERVICE AREAS

- Data Analytics & Visualization
- Artificial Intelligence & Data Science
- Digital Transformation
- Information Technology & Cloud

USING MACHINE LEARNING IN A DYNAMIC MONITORING SOFTWARE PLATFORM FOR IMPROVE EQUIPMENT REPAIR

CASE STUDY: U.S. ARMY

OVERVIEW

Departmental or program office staff receive a variety of data files from other team members, contractors, stakeholders, clients, and enterprise data programs, often with each file being in a different format. Our client faced issues inefficiently cleaning, ingesting, synthesizing, and analyzing pertinent information to make meaningful business decisions in a timely manner.

Using customized data management, business intelligence, and machine learning capabilities, our team developed AUREUS to provide a centralized and dynamic platform for monitoring historical and current repairs data as well as associated funding. The AUREUS tool is designed to assist in managing the long-term sustainment, repair execution, and oversight of systems/platforms, including the monitoring of contracting performance for the latest vendor contracts.



12 Databases Ingested to Automate Analyses



35% Reduction in Planning & Logistics Time

CONCLUSION

With integrated predictive analytics and custom machine learning algorithms, end-users can accurately forecast potential risks to the organization or program based on future data. Rather than deploying static modeling, the team developed a continual machine learning framework with the ability to retrain and reparametrize the model at the introduction of new data, resulting in minimized model performance monitoring needs and consistent production of accurate results over time.



KEY FEATURES

- Automated High Performance Pre-Fit Models Generation
- Regression Prediction to indicate days required for repair
- Classification Prediction to indicate repair groupings
- Model Customization Features
- Fully quipped model validation features allows user to test and evaluate performance prior to Deployment
- Plug & Play Style Model Import Feature, allowing user to immediately use recommended model(s)

RELEVANCY SERVICE AREAS

- Data Analytics & Visualization
- Artificial Intelligence & Data Science
- Digital Transformation
- Operational Analysis

TRANSFORMING FINANCIAL & CONTRACT PLANNING WITH MACHINE LEARNING, SEGMENTATION, AND DATA VISUALIZATION

CASE STUDY: U.S. NAVY

OVERVIEW

In today's digital era, government financial data management presents a unique set of challenges. One significant issue is the fragmentation of data across various siloed repositories, often compounded by inaccuracies due to manual data entry. This disjointed approach leads to inefficiencies, errors, and a lack of transparency, posing obstacles in financial planning and auditing processes.

To address these challenges, we introduce **RECAST** - an innovative solution designed to revolutionize the way government financial data is handled. **RECAST** harnesses the power of enhanced data validation and machine-learning infused forecasting to ensure accuracy and reliability in financial data management. Coupled with modular enterprise system integration capability (e.g., Navy ERP, Shared Data Warehouse), **RECAST** provides a one-stop shop for government financial planning and analytics.



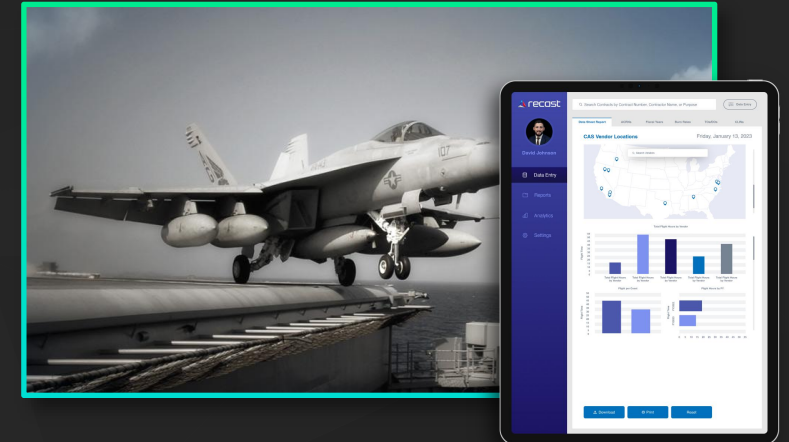
Government Enterprise
System Migration Capabilities



95% Reduction in
Manual Entry Error

CONCLUSION

RECAST stands at the forefront of financial data management innovation, fundamentally transforming how government entities handle their fiscal responsibilities. Its integration of predictive analytics allows for precise forecasting of potential financial risks, leveraging not just historical data but also embracing the dynamism of unknown and future data sets. Moving beyond traditional static models, **RECAST** is built on a continually evolving machine learning framework. This advanced approach enables the system to self-adjust and improve with the introduction of new data, significantly reducing the need for constant model performance monitoring.



KEY FEATURES

- Enhanced Data Validation Mechanisms
- Machine-learning infused spend plan forecasting
- Government Enterprise Financial Management System Integration
- Exportable XLSX and CSV Reporting
- Tailorable Data Visualization Suite

RELEVANCY TO SEC REQUIREMENTS

- Data Analytics & Visualization
- Artificial Intelligence & Data Science
- Digital Transformation
- Operational Analysis
- Risk & Financial Analysis

BUILDING A NEW BRAND & IMAGE FOR A SOVEREIGN GOVERNMENT HEALTH SYSTEM

CASE STUDY: OSAGE NATION

OVERVIEW

In an effort to modernize the health system for their entire native community, the Osage Nation approached Boulevard to create a new logo and branding that would impart a contemporary and professional appearance while encapsulating their values and community identity.

Our approach involved collaborating closely with the tribe to understand their vision for the new logo. We seamlessly integrated colors and symbols that celebrated the Osage Nation's rich cultural heritage. The outcome was a seal-like logo that ingeniously incorporated tribal patterns and the symbolic "sky bird." Additionally, we integrated the Osage Nation's native language as well as featuring the significant "Si-Si-A-Pe-Txa." To further honor the diversity within Osage communities, the logos boasted four color variations, each representing one of the four communities.



Designed a modern health system logo honoring Osage heritage and community identity.



Delivered a comprehensive website and community-focused merchandise to promote engagement and well-being.

CONCLUSION

Beyond crafting logos for the Osage Nation Health System, we extended our creative expertise to design a comprehensive website showcasing their health services. Simultaneously, we developed unique athletic merchandise designs tailored to individual communities. These designs aimed not only to encourage physical well-being but also foster social engagement, aligning with the Osage Nation's holistic approach to health.

KEY FEATURES

- Collaborative Branding Process
- Culturally-Integrated Visual Identity Design
- Multi-Variant Logo System Reflecting Community Diversity
- Native Language and Symbolic Element Integration
- Web & Merchandise Design Aligned with Holistic Health Goals





FEASIBILITY ANALYSIS FOR CHILDCARE DEVELOPMENT RESOURCES & INFRASTRUCTURE

CASE STUDY: CHICKAHOMINY INDIAN TRIBE (NATIVE AMERICAN GOVERNMENT)

OVERVIEW

The need for childcare services today continues to grow in importance for working families and those seeking structured, culturally aligned, and/or more academically rigorous programs for any age group. As a Native American tribe grows its citizenship census and expand its services to its members, passing tribal history knowledge and culturally significant traditions on to the youngest generations is critical for the longevity of the tribe's story, the strength of its governmental position and foundation in current day America, and the power of those citizens that will continue to tell the story year after year, generation after generation. Our team of consultants and data scientists worked with the tribal leadership in evaluating the tribal resource requirements and community impact of developing a new childcare development center.



Comprehensive Feasibility Study & Report for Aiding Grant Funding Requirements & Tribal Childcare Planning



Custom-developed Machine-learning Software Application for Site Identification & Resource Optimization

CONCLUSION

The Boulevard team aggregated numerous data sources, and determined the feasibility of such a center given financial, operational, risk, and cultural impacts. Additionally, our team even used publicly available data to develop a custom, machine-learning-driven (with a KMeans clustering algorithm) toolset to support the tribe's evaluation of commuting options and local resources that may support the center. For example, the toolset helped the feasibility analysis team identify the optimal center location, travel considerations based on routes, alternative childcare options that may compete with the new center, vendor support, and reasonable pricing and demand/supply chain optimization.

KEY FEATURES

- Comprehensive feasibility analysis to meet Federal/State Grant funding requirements
- Machine-learning algorithm application for resource selection and optimization, along with ideal site location identification
- Comprehensive analyses of publicly available data/information to support strategic planning and operational execution for center

RELEVANCY TO SEC REQUIREMENTS

- Data Analytics & Visualization
- Artificial Intelligence & Data Science
- Operational Analysis
- Business Case Analysis (BCA)
- Risk & Financial Analysis
- Lean Supply Chain



DESIGNING & SIMULATING A NEW METALS MANUFACTURING PRODUCTION PROCESS

CASE STUDY: INTERNATIONAL PIPING & MACHINING SOLUTIONS MANUFACTURER

OVERVIEW

Where the supply chain challenges of COVID-19 devastated numerous product manufacturers and service providers with an inability to import/export, our client – a \$4B Swiss manufacturer of residential and commercial piping and related products – experienced tremendous growth for metal products used in the utilities and gas industry. With sales growth anticipated to exceed a 30% increase for their products, the need for a new, larger, and more efficient manufacturing operation was needed.

Our team evaluated the current state process using Lean Six Sigma and Industrial/Systems Engineering methods to outline the current production processes, and further develop future-state options for three product areas. In addition to a custom simulation capability, our team also used Computer-aided Design (CAD) and Simio® simulation software to build renderings and analysis results to drive improvements for the new facility. In addition to new designs ready for the Architecture and General Contractor teams, our analysis products included financial/cost forecasts for build-out and sustainment, as well as risk, and performance (e.g., throughput) measures.



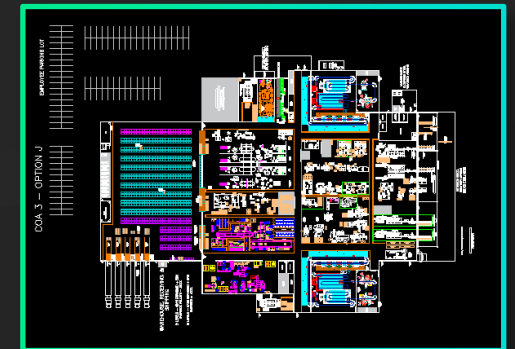
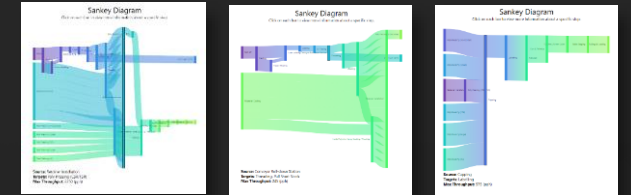
Anticipated reduction in material handling movements of up to **65%**



Anticipated throughput of up to **115%** with new process design implementation

CONCLUSION

Our team quickly mapped all processes and constructed detailed renderings to support the client's need to understand each process activity, cycle times, location of bottlenecks, and opportunities for improvement. Not only were multiple potential solutions offered to allow the client to view the “trade space” of feasible designs, but the client was offered research and recommendations for future technology integrations (e.g., Internet of Things [IoT], new mechanization), inventory management solutions, and data/operational visualization capabilities.



KEY FEATURES

- CAD renderings with accompanying simulation profiles and results
- Warehouse “right-sizing” and material handling solutions
- Human capital / resource analysis and optimization
- Industrial engineering

RELEVANCY TO SEC REQUIREMENTS

- Data Analytics & Visualization
- Operational Excellence
- Lean Supply Chain
- Operational Analysis
- Risk & Financial Analysis

CREATING STRATEGY, POLICY, & ANALYSIS FOR IT PORTFOLIO MANAGEMENT & CLOUD MIGRATION

CASE STUDY: U.S. MARINE CORPS

OVERVIEW

In the ever-evolving Defense Information Technology (IT) environment, teams often struggle to build the necessary requirements and solutions for the future of warfare and support functions. With our team's seasoned military experts, data scientists, researchers, and data/information modelers, we are on the fore-front of our client's efforts in building strategy and policy, while also developing the programmatic, acquisition, and operational solutions needed to move the Defense community forward. For years, we have supported the Marine Corps' logistics community in operational improvement studies, building data visualization and forecasting/prediction toolsets in support of the Defense logistics community (e.g., Defense Logistics Agency [DLA] Defense Agencies Initiative [DAI]), and even supporting the development of key policy and strategy for the future of the logistics IT portfolio of software solutions.



Provided management support for a systems portfolio valued at over **\$100M**



Assessed and tracked the controlled migration of over **50** Logistics IT systems to the cloud

CONCLUSION

Boulevard's team of experts enabled the success of the logistics community in the strategic management of a portfolio encompassing all the logistics IT systems utilized across the Marine Corps. Leveraging modern analytical methodologies, we assessed the risk of migration to cloud-based solutions and implementation of data warehouse solutions. The results of such detailed assessments contributed to the development of strategic plans and modernization roadmaps to meet the current and future demands of the Marine Corps. Through the application of modern data science, comprehensive risk assessment, and efficient program management, Boulevard Consulting ensures that the Marine Corps will meet the requirements of Force Design initiatives.



KEY FEATURES

- Policy and strategic management and advisory support to logistics community leaders
- Data science, systems architecture, and cloud analysis for logistics IT environment
- Cloud-system analysis and roadmapping
- Data/Information modeling in support of greater logistics community

RELEVANCY TO SEC REQUIREMENTS

- Decision & Data Management
- Data Analytics & Visualization
- Artificial Intelligence & Data Science
- Digital Transformation
- Operational Analysis
- IT Infrastructure & Cloud



DOING BUSINESS

WHERE EXPERIMENTATION MEETS EXECUTION

CONFIDENTIAL AND PROPRIETARY

Any use of this material without specific permission of Boulevard Consulting is strictly prohibited. Copyright ©2025.

boulevardconsulting



GSA MULTIPLE AWARD SCHEDULE (MAS)



OVERVIEW

The GSA MAS gives federal, state, and local government buyers access to Boulevard's commercial services while saving you time and money. The program features regulatory compliance, fair and reasonable prices, Tier 2 spending, and vast supplies and services.

The Special Item Numbers (SINs) aligned under Boulevard's MAS contract include the following:

541611	Management and Financial Consulting, Acquisition and Grants Management Support, and Business Program and Project Management Services
54151S	IT Professional Services
54151HEAL	Health Related IT Services
518210C	Cloud & Cloud Related IT Services

If you are a government customer and seek to use either a general services administration (GSA) schedule, you can find our corporate contract information (Contract #47QRAA19D0051) posted to GSA Advantage! [Here](#). However, please contact us at ryan.burge@boulevardcg.com or via phone at (703) 566-6913, and we will provide our service and price market sheet or other requested materials.

WHY USE MAS?

In addition to ease of using the GSA MAS vehicle, Boulevard is also a member of the 8(a) sole source pool, providing interested clients with a sole source contracting option using the GSA MAS. Alternatively, Boulevard can be sole sourced directly through the SBA 8(a) program.

Further, contractors holding a GSA MAS, according to FAR Part 12 and FAR Subpart 9.1, help support the government by:

- Having adequate financial resources to perform the work anticipated.
- Can meet the delivery or performance requirements.
- Have a satisfactory performance record.
- Have a satisfactory record of integrity and business ethics.
- Have the corporate facilities, resources, equipment, skills, and controls to do the work.
- Are otherwise qualified and eligible to receive a contract award under federal laws and regulations.
- Are TAA-compliant regardless of order value.
- We also evaluate offerors' corporate experience, past performance, and quality control.

GSA 8(a) STARS III



FUTURE CLIENTS

The Best-in-Class 8(a) STARS III GWAC is a small business set-aside contract that provides flexible access to IT services and customized IT services-based solutions from a large, diverse pool of 8(a) industry partners.

If you are a government customer and seek to use our 8(a) STARS III vehicle (Contract #47QTCB22D0339), you can find ordering procedures [Here](#), or can reach to our team directly at ryan.burge@boulevardcg.com or via phone at (703) 566-6913, and we will provide our service and price market sheet or other requested materials.

WHY USE 8(a) STARS III?

The 8(a) STARS III GWAC is primarily used for IT services and IT services-based solutions. With a ceiling of \$50 billion, it offers a five-year base with one three-year option (started July 2, 2029) ordering period, and can be used for fixed price, time and materials, labor-hour, or a hybrid blend.

The GWAC:

- Expands capabilities for emerging technologies,
- Supports both outside of the continental United States (OCONUS) and CONUS requirements,
- Allows sole source orders up to the 8(a) competitive threshold,
- Features limited protestability up to \$10M, and
- Offers expert guidance from the GSA team, including free scope review services and market

DOING BUSINESS WITH US

OVERVIEW

From clients in healthcare to supply chain to manufacturing to military, our experts are here to provide the value you need to solve any challenge. Regardless of whether you are a commercial or government customer, please use the contact information below to reach out with interest.

- If you are a government customer and seek to use either a general services administration (GSA) vehicle or the SBA 8(a) program, you can find our corporate contract information (Contract #47QRAA19D0051) posted to GSA Advantage! for our GSA MAS and 8(a) STARS III contracts. Additionally, for direct award / sole source contracting, Boulevard is a member of the SBA's 8(a) program.

FUTURE TEAMING PARTNERS

- As we guarantee the best service and analytically-sound solutions possible, we welcome you to explore our services and reach to us if you feel your organization may offer services and/or products that allow us – together – to provide the latest technologies and capabilities to carry them forward.

Visit our website at www.boulevardcg.com, contact us by e-mail at ryan.burge@boulevardcg.com, or by phone at (703) 566-6913 to reach Managing Partner, Ryan Burge.

DOING BUSINESS WITH US

VIA SBA PROGRAM

WHAT IS THE PROGRAM

The Small Business Administration (SBA) 8(a) small business development program offers small disadvantaged businesses a wide range of assistance to help them compete in the marketplace and gain traction in federal government contracting. The focus of the program is to provide business development support, including procurement assistance, mentoring, business counseling, financial assistance, and training to help small businesses participate in competitive acquisitions.

WHAT DOES THIS MEAN FOR A CONTRACTING OFFICER?

For federal contracting officers, using an 8(a) small business contractor makes procurement simple and streamlined. A program manager must have a valid requirement conveyed through a statement of work, and funding has to be available. As the contracting officer, a contracting officer can determine what type of 8(a) small business contracting opportunity to conduct.

HOW SIMPLE IS THIS AND WHAT ARE THE BENEFITS?

A sole source 8(a) contract can be awarded if the contracting officer does not have a reasonable expectation that two or more qualified 8(a) small businesses will submit offers, determines that the qualified 8(a) small business contractor is responsible, and determines that the contract can be awarded at a fair price. The 8(a) sole source vehicle offers agencies a shortened acquisition process:

- **INITIATE A CONTRACT WITH A SIMPLE HIGH-LEVEL STATEMENT OF WORK**
- **REDUCED DECISION CYCLE**
- **LOWERED ADMINISTRATIVE COSTS**
- **PRICES THAT REFLECT THE BEST VALUE**



CORPORATE OVERVIEW

CORPORATE ADDRESS	PERFORMANCE & TECHNICAL	FINANCE & CONTRACT MANAGEMENT
<p> The Boulevard Consulting Group, LLC. 2611 South Clark Street Suite 430 Arlington, VA 22202 Web: www.boulevardcg.com </p>	<p> Ryan Burge (703) 566-6915 Fax: (703) 566-6915 ryan.burge@boulevardcg.com </p>	<p> James Bagg (703) 566-6895 Fax: (703) 566-6915 james.bagg@boulevardcg.com </p>

CORPORATE DESIGNATIONS & ENTITY REGISTRATIONS

CAGE: 70AG9

DUNS: 078721312

UEI: DYV5P3KPC474

IRS EIN: 46-1733678

Business Size: Small

Business Classification: Small, Disadvantaged Business (SDB); Member of the Small Business Administration (SBA) 8(a) Development Program; Minority / Native American Owned Business; Indian Economic Enterprise (IEE); Indian Small Business Economic Enterprise (ISBEE)

Top Secret Facility Clearance (TS FCL; Non-possessing Facility)

CMMC Level 2.0 Deployed (Pending Audit/Certification) with Managed Services through Certified Microsoft Partner

Microsoft 365 Government Community Cloud High (GCC-High) Deployed



THANK YOU

CONFIDENTIAL AND PROPRIETARY

Any use of this material without specific permission of Boulevard Consulting is strictly prohibited. Copyright ©2025.

boulevardconsulting